

Mount Airy Clay Breakers Garden Club

Breaking News

Spring 2015



Calendar of Upcoming Events



May 14

Before Meeting Tour of
Member Gardens at 5:45

Plant Exchange &
Floral Design Contest/
Elections

Jun 9

Soleado Lavender Farm
& Sugarloaf Mt. Winery
Tour. Depart/drop-off
Cheverly, MD from 8:15
am-4:30 pm

Jun 11

Installation Dinner

Aug 8

Annual Potluck

See back page for
education opportunities!

Editors: Lenay O'Quinn
and Deborah Determan.
Next edition will be
published Jul 2015.
Send input to Lenay and
Deborah by Jul 6th,
with captions for photos.

Earth's Treasures

Horticulture — Defined



Horticulture is the branch of agriculture that deals with the art, science, technology, and business of plant cultivation.

Scope

Horticulture involves nine areas of study, which can be grouped into two broad sections – ornamentals and edibles:

Arboriculture is the study of, and the selection, planting, care, and removal of, individual trees, shrubs, vines, and other perennial woody plants.

Turf management includes all aspects of the production and maintenance of turf grass for sports, leisure use or amenity use.

Floriculture includes the production and marketing of floral crops.

Landscape horticulture includes the production, marketing and maintenance of landscape plants.

Olericulture includes the production and marketing of vegetables.

Pomology includes the production and marketing of pome* fruits.

Viticulture includes the production and marketing of grapes.

Oenology includes all aspects of wine and winemaking.

* Pome is a type of fruit produced by flowering plants in the subtribe Malinae of the family Rosaceae

Article condensed from Wikipedia

President's Corner

With spring coming, I know each of you have plans for your gardens. Here is a great place that might be helpful for new ideas, information about which plants to plant where, perennial borders, perfect planters, and small vegetable gardens. It is the Better Homes and Garden website - BHG.com. It offers 200 free plans of different gardens, and an extensive video library. It has a Plant Encyclopedia and an interactive tool that lets you mix and match more than 80 combinations to visualize container designs. It is that time of year for us to put our hands in the dirt, so let us go out and garden!

Happy Gardening to each of you.

Gilda

Invasive Species of Concern in Maryland: Insects

<u>Key Code</u>	Scientific Name	Common Name	Key code
1, 2, 3	<i>Adelges tsugae</i>	Hemlock Woolly Adelgid	<ol style="list-style-type: none"> 1. Currently regulated by state and/or federal law 2. Widely recognized by biologists and natural resource managers to degrade natural resources and/or negatively impact native species 3. Known to have a negative economic impact on agricultural or natural resources 4. Known or potential negative impacts on human (or animal) health
1, 2, 3	<i>Agrilus planipennis</i>	Emerald Ash Borer	
1, 2, 3	<i>Anoplophora glabripennis</i>	Asian Longhorned Beetle	
3	<i>Exomala orientalis</i>	Oriental Beetle	
1, 2, 3	<i>Lymantria dispar</i>	Gypsy Moth	
3	<i>Otiorhynchus sulcatus</i>	Black Vine Weevil	
1, 3	<i>Popillia japonica</i>	Japanese Beetle	
1, 2, 3, 4	<i>Solenopsis invicta</i>	Red Imported Fire Ant	
1, 3	<i>Tomicus piniperda</i>	Pine Shoot Beetle	

Information courtesy of The Maryland Invasive Species Council (MISC)
http://www.mdinvasivesp.org/invasive_species_md.html



Hemlock Woolly Adelgid



Emerald Ash Borer



Asian Longhorned Beetle



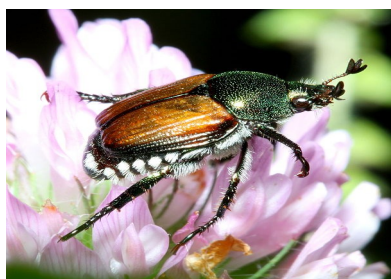
Oriental Beetle



Gypsy Moth



Black Vine Weevil



Japanese Beetle



Red Imported Fire Ant



Pine Shoot Beetle

Photographs courtesy of Wikipedia

Our March White Elephant Sale was a huge success...we made \$78.50!

Next sale will be at the August picnic.

Bring any items you would like to donate to the sale, and please have them marked with the price—proceeds will go back into the club.



We made almost \$500 at our Plant Sale and had good participation from club members. Leftover plants will be available for the plant exchange at the May meeting.

**Dinner Meeting and Installation of Officers Jun 11 at 6pm.
Mamma Roma's in Brandywine Crossing
15908 Crain Hwy Brandywine, MD**



Menu Selection

****Dinner entrées includes a drink, side salad, garlic bread, a dessert (an assortment of cannoli, tiramisu and cheesecake) and coffee.
Also includes gratuity. *Wine is not included.***

#1 Ravioli Margarita \$20.00 Cheese ravioli filled with ricotta cheese topped with home-made tomato sauce fresh basil, baked with mozzarella.

#2 Penne Mamma Mia \$20.00 Penne, diced fried zucchini, sautéed in a marinara sauce, topped with mozzarella.

#3 Brunello \$23.00 Breast of fresh chicken, diced in marsala cream sauce topped with mushrooms over penne pasta.

#4 Fettuccine Mediterraneo \$23.00 Fresh shrimp, crabmeat and scallops in pink cream sauce over fettuccine.

#5 Veal Parmigiana \$24.00 Fresh Veal scaloppini lightly breaded and topped with tomato sauce and mozzarella cheese over spaghetti.

*****Payment and Meal selection number*****

Please give payment and selection number to Carol only. Make checks out to our club.

OPPORTUNITIES!!!

Accokeek Foundation

3400 Bryan Point Road

Accokeek, Maryland 20607

Register on-line: go to accokeekfoundation.org for more information

May 17 - Food Foraging Walk 12 - 3 pm | \$15 per person (\$10 for AF members)

June 21 - Mushroom Cultivation 12 - 3 pm | \$15 per person (\$10 for AF members)

Adkins Arboretum 12610 Eveland Road, Ridgely, MD 21660

<http://www.adkinsarboretum.org> for more information— some programs have costs

May

- ♦ [Soup 'n Walk: Tuckahoe Creek & Beyond - Saturday, May 16](#)
- ♦ [Beekeeping: Split & Divide a Hive - Saturday, May 23](#)
- ♦ [Pressed Botanicals Workshop - Thursday, May 28](#)
- ♦ [Skunk Cabbage Leaf Casting - Friday, May 29](#)
- ♦ [Sowing Native Seeds Workshop - Saturday, May 30](#)
- ♦ [Outdoor Explorers program: Talking Bones - Sunday, May 31](#)

Jun

- ♦ [New York City High Line bus trip - Tuesday, June 2](#)
- ♦ [Nature as Muse - Wednesday, June 3](#)
- ♦ [First Saturday Guided Walk - Saturday, June 6](#)
- ♦ [Forest Music - Mana Saxophone Quartet - Friday, June 12](#)
- ♦ [Second Saturday Nursery Walk - Saturday, June 13](#)
- ♦ [Photography Walk and Soup - Saturday, June 6](#)
- ♦ [Plants for Pollinators - Saturday, June 20](#)
- ♦ [Movie: Potomac: The River Runs Through Us - Sunday, June 14](#)

Jul

- ♦ [Nature as Muse - Wednesday, July 1](#)
- ♦ [First Saturday Guided Walk - Saturday, July 4](#)
- ♦ [Second Saturday Nursery Walk - Saturday, July 11](#)
- ♦ [Beekeeping: Honey Extraction - Saturday, July 11](#)

SOME
OPPORTUNITIES
only come once
**SEIZE
THEM**

THE THINGS THEY SAY.COM

The Mt. Airy Claybreakers Garden Club donated five mini Areca Palms to the Surratts-Clinton Library in conjunction with their Gardening Workshops during the months of March and April. The workshops were conducted by the Prince George's County Master Gardeners Association and they addressed topics such as *Companion Planting* and *Wildlife Nuisances*. Librarians paired the mini palms with gardening books to form five displays around the library. Titles included *Grow It; Eat It* and *Composting*. According to the librarians, the workshops were popular and circulation of the gardening books on display was brisk.



In Memoriam

"What we have done for ourselves alone dies with us; what we have done for others, and the world, remains... immortal."

-- Albert Pike

We recently lost a dear friend...Marian, may you rest in peace.